

CPT1B Antibody (C-term)
Affinity Purified Rabbit Polyclonal Antibody (Pab)
Catalog # AP16713B**Specification**

CPT1B Antibody (C-term) - Product Information

| | |
|-------------------|---|
| Application | WB,E |
| Primary Accession | O92523 |
| Other Accession | NP_001138609.1 , NP_001138607.1 |
| Reactivity | Human |
| Host | Rabbit |
| Clonality | Polyclonal |
| Isotype | Rabbit IgG |
| Calculated MW | 87801 |
| Antigen Region | 744-770 |

CPT1B Antibody (C-term) - Additional Information**Gene ID** 1375**Other Names**

Carnitine O-palmitoyltransferase 1, muscle isoform, CPT1-M, Carnitine O-palmitoyltransferase I, muscle isoform, CPT I, CPTI-M, Carnitine palmitoyltransferase 1B, Carnitine palmitoyltransferase I-like protein, CPT1B, KIAA1670

Target/Specificity

This CPT1B antibody is generated from rabbits immunized with a KLH conjugated synthetic peptide between 744-770 amino acids from the C-terminal region of human CPT1B.

Dilution

WB~~1:1000

E~~Use at an assay dependent concentration.

Format

Purified polyclonal antibody supplied in PBS with 0.09% (W/V) sodium azide. This antibody is purified through a protein A column, followed by peptide affinity purification.

Storage

Maintain refrigerated at 2-8°C for up to 2 weeks. For long term storage store at -20°C in small aliquots to prevent freeze-thaw cycles.

Precautions

CPT1B Antibody (C-term) is for research use only and not for use in diagnostic or therapeutic procedures.

CPT1B Antibody (C-term) - Protein Information**Name** CPT1B

Synonyms KIAA1670

Function Catalyzes the transfer of the acyl group of long-chain fatty acid-CoA conjugates onto carnitine, an essential step for the mitochondrial uptake of long-chain fatty acids and their subsequent beta-oxidation in the mitochondrion.

Cellular Location

Mitochondrion outer membrane; Multi-pass membrane protein

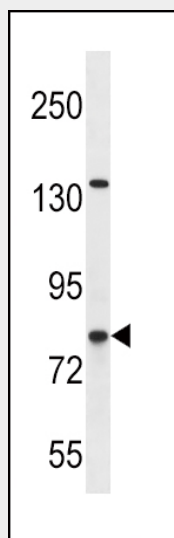
Tissue Location

Strong expression in heart and skeletal muscle. No expression in liver and kidney

CPT1B Antibody (C-term) - Protocols

Provided below are standard protocols that you may find useful for product applications.

- [Western Blot](#)
- [Blocking Peptides](#)
- [Dot Blot](#)
- [Immunohistochemistry](#)
- [Immunofluorescence](#)
- [Immunoprecipitation](#)
- [Flow Cytometry](#)
- [Cell Culture](#)

CPT1B Antibody (C-term) - Images

CPT1B Antibody (C-term) (Cat. #AP16713b) western blot analysis in SK-BR-3 cell line lysates (35ug/lane). This demonstrates the CPT1B antibody detected the CPT1B protein (arrow).

CPT1B Antibody (C-term) - Background

The protein encoded by this gene, a member of the carnitine/choline acetyltransferase family, is the rate-controlling enzyme of the long-chain fatty acid beta-oxidation pathway in muscle mitochondria. This enzyme is required for the net transport of long-chain fatty acyl-CoAs from the cytoplasm into the

mitochondria. Multiple transcript variants encoding different isoforms have been found for this gene, and read-through transcripts are expressed from the upstream locus that include exons from this gene.

CPT1B Antibody (C-term) - References

Matsuo, T., et al. Biochem. Genet. 48 (3-4), 193-201 (2010) :
Miljkovic, I., et al. Obesity (Silver Spring) 17(7):1396-1401(2009)
Miyagawa, T., et al. PLoS ONE 4 (4), E5394 (2009) :
van der Leij, F.R., et al. J. Biol. Chem. 277(30):26994-27005(2002)
Yamazaki, N., et al. J. Biol. Chem. 275(41):31739-31746(2000)